

STEFANIA EVANSI (Groete Creek Carrying Frog). **REPRODUCTION.** *Stefania evansi* is a large hemiphractine hylid frog restricted to Guyana from Kartabo and Groete Creek, westward to Mount Roraima at elevations of 10–1402 m (Duellman and Hoogmoed 1984. Misc. Publ. Mus. Nat. Hist. Univ. Kansas 75:1–39; MacCulloch and Lathrop 2002. Herpetologica 58:327–346). Like all other *Stefania* species, female *S. evansi* are known to carry eggs and juveniles exposed on their back, adhering to a mucus layer. As noted by Jungfer and Boehme (1991. Rev. fr. Aquariol. 18:91–96), very few female *S. evansi* carrying eggs or embryos are known. Only 4 cases of egg brooding females are known to us: Boulenger (1904. Proc. Zool. Soc. London 1904[2]:106) reported a female with 22 eggs from Groete Creek; Lang (1923. Nat. Hist. New York 24:467–478) reported a female with 24 eggs from Kamakusa; Jungfer and Boehme (*op. cit.*) reported a female carrying 21 juveniles from Ataro River; MacCulloch and Lathrop (*op. cit.*) reported a female with 11 near-term juveniles from the base of Mount Ayanganna.

Here we report a female (97.5 mm SVL—likely a new size record) carrying 25 eggs (Fig. 1). This large, striped morph female (Pattern B of Duellman and Hoogmoed, *op. cit.*), was collected by Festus Marco and two of us (PJRK and PB) at 1500 h on 24 June 2004 on rocks along a cascading stream in primary forest near Tukeit, ca. 150 m elev. in Kaieteur National Park, Guyana.

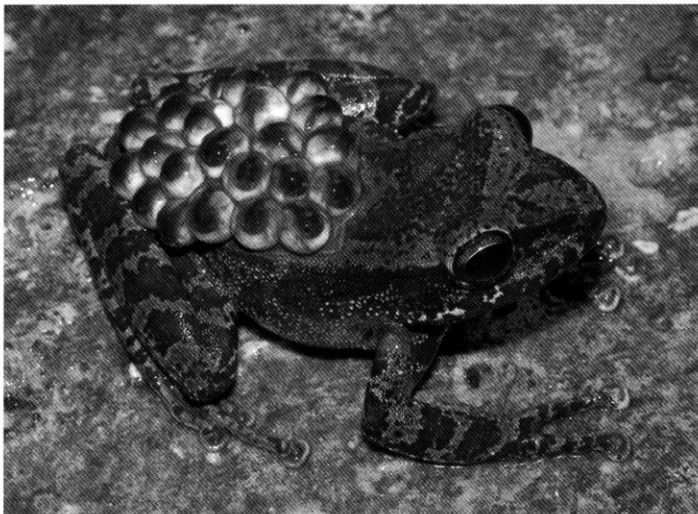


FIG. 1. Female *Stefania evansi* (IRSNB 13673), 97.5 mm SVL, carrying 25 eggs in the vicinity of Tukeit, Kaieteur National Park, Guyana.

The specimen was deposited in the herpetological collection of the Royal Belgian Institute of Natural Sciences (IRSNB 13673).

Duellman and Hoogmoed (*op. cit.*) indicated that reproduction of *Stefania* species is probably restricted to the wetter times of the year because most females carrying eggs have been collected in the rainy season. These authors also indicated that duration of development and egg brooding is unknown, but should probably require 2–3 months. According to the four literature records and this observation, female *S. evansi* carrying eggs were found in January, June, and late November while females with near-term juveniles were collected in October and early November. There are two distinct wet seasons in Guyana, the first “long” wet season occurring approximately from April to August and the second “short” wet season occurring approximately from November to January. Although breeding activity of *S. evansi* seems to be more common during the two rainy seasons, the available data do not indicate a rigid schedule of breeding.

We gratefully acknowledge the financial support of the Directorate General of Development Cooperation (Belgian Development Cooperation), and the National Science Foundation (NSF). Permission to conduct the herpetofaunal surveys was granted by the Prime Minister of Guyana, Honorable Samuel Hinds, and S. Nokta and I. Nathoo of the Guyana National Parks Commission, with research and collection permit 180604 BR 011 issued by the Guyana Environmental Protection Agency.

Submitted by **PHILIPPE J. R. KOK**, Department of Vertebrates, Royal Belgian Institute of Natural Sciences, 29 rue Vautier, B-1000 Brussels, Belgium (e-mail: Philippe.Kok@naturalsciences.be); **GODFREY R. BOURNE**, Department of Biology, University of Missouri-St. Louis, 8001 Natural Bridge Road, St. Louis, Missouri 63121-4499, USA, and National Science Foundation, Division of Integrative Organismal Biology, Behavioral Systems Cluster, 4201 Wilson Boulevard, Arlington, Virginia 22230, USA (e-mail: gbourne@nsf.gov); **PAUL BENJAMIN**, Kaieteur National Park, Guyana; and **GEORGES L. LENGLET**, Department of Vertebrates, Royal Belgian Institute of Natural Sciences, 29 rue Vautier, B-1000 Brussels, Belgium (e-mail: Georges.Lenglet@naturalsciences.be).